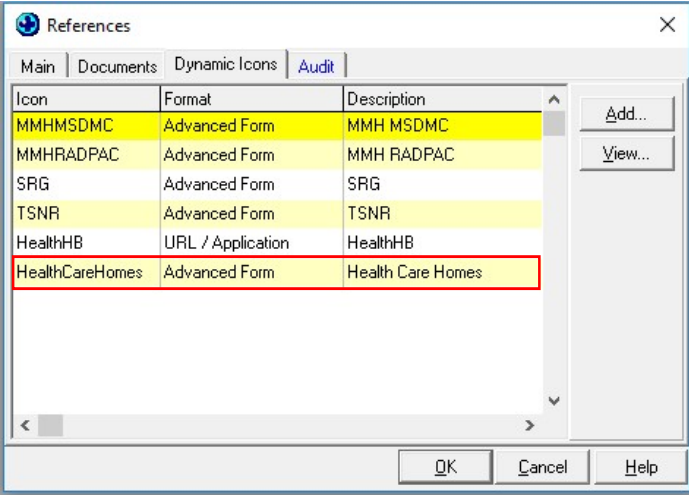

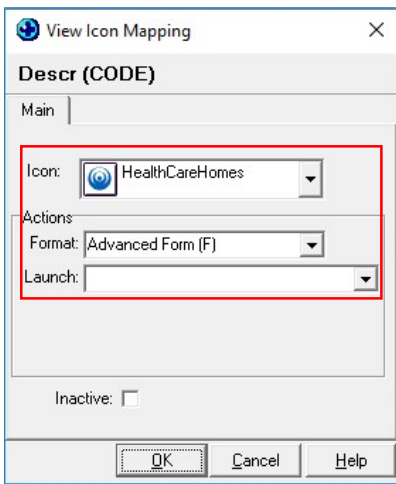


Health Care Homes – Dynamic Icon Installation

1.	Download Health Care Homes dynamic icon installer (HealthCareHomes Dynamic Icon Installer.exe) from the location provided	<input type="checkbox"/>																					
2.	Ensure that the HealthCareHomes Dynamic Icon Installer is made available to the practice by placing it on the Medtech32 server	<input type="checkbox"/>																					
3.	<p>Double-click on the HealthCareHomes Dynamic Icon Installer and follow the prompts during the installation process</p> <ul style="list-style-type: none"> - This installer can be run whilst all users are logged into Medtech32 - Users will be required to log out and back into Medtech32 to see the relevant changes 	<input type="checkbox"/>																					
4.	<p>Post running the HealthCareHomes Dynamic Icon Installer, log into Medtech32 and navigate to Setup > Reference Numbers, and select the Dynamic Icons tab.</p> <p>The Health Care Homes icon reference will be displayed with the following details:</p> <p>Icon: HealthCareHomes Format: Advanced Form Description: Health Care Homes</p>  <table border="1" data-bbox="130 974 821 1467"> <thead> <tr> <th>Icon</th> <th>Format</th> <th>Description</th> </tr> </thead> <tbody> <tr> <td>MMHMSDMC</td> <td>Advanced Form</td> <td>MMH MSDMC</td> </tr> <tr> <td>MMHRADPAC</td> <td>Advanced Form</td> <td>MMH RADPAC</td> </tr> <tr> <td>SRG</td> <td>Advanced Form</td> <td>SRG</td> </tr> <tr> <td>TSNR</td> <td>Advanced Form</td> <td>TSNR</td> </tr> <tr> <td>HealthHB</td> <td>URL / Application</td> <td>HealthHB</td> </tr> <tr style="border: 2px solid red;"> <td>HealthCareHomes</td> <td>Advanced Form</td> <td>Health Care Homes</td> </tr> </tbody> </table>	Icon	Format	Description	MMHMSDMC	Advanced Form	MMH MSDMC	MMHRADPAC	Advanced Form	MMH RADPAC	SRG	Advanced Form	SRG	TSNR	Advanced Form	TSNR	HealthHB	URL / Application	HealthHB	HealthCareHomes	Advanced Form	Health Care Homes	<input type="checkbox"/>
Icon	Format	Description																					
MMHMSDMC	Advanced Form	MMH MSDMC																					
MMHRADPAC	Advanced Form	MMH RADPAC																					
SRG	Advanced Form	SRG																					
TSNR	Advanced Form	TSNR																					
HealthHB	URL / Application	HealthHB																					
HealthCareHomes	Advanced Form	Health Care Homes																					
5.	<p>Select the HealthCareHomes icon reference and click on the View icon to select the Advanced Form / Advanced Form Group or URL that will be launched:</p> <p>Icon: </p> <p>Format: Advanced Form Launch: <Select the form to be launched> (or) Format: Advanced Form Group Launch: <Select the group of Advanced Forms to be launched> (or) Format: URL Launch: <Type in the URL to be launched></p> <p>Click on OK to close the screen once the configuration has been selected and entered</p>	<input type="checkbox"/>																					

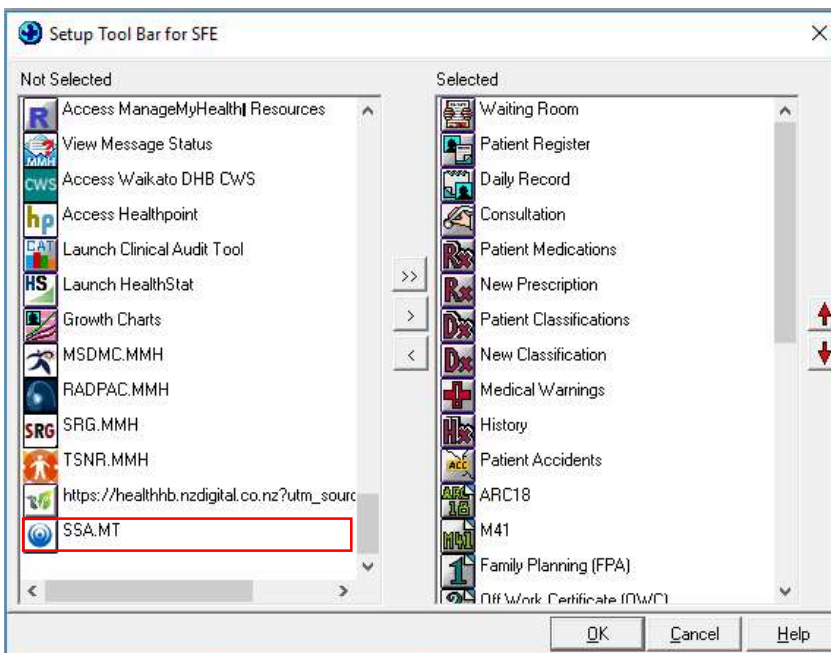


To configure the icon on the toolbar of a user navigate to Window > Toolbar > Setup.

Locate the HealthCareHomes icon on the 'Not Selected' side of the toolbar setup screen, and move it to the 'Selected' side.

Click on OK to save the toolbar configuration changes.

6.



7. Complete the toolbar setup for each user that requires access

With a patient selected in Medtech32, click on the HealthCareHomes icon on the Medtech32 toolbar.

8.



The selected Advanced Form / Advanced Form Group or URL will be launched and presented to the user.